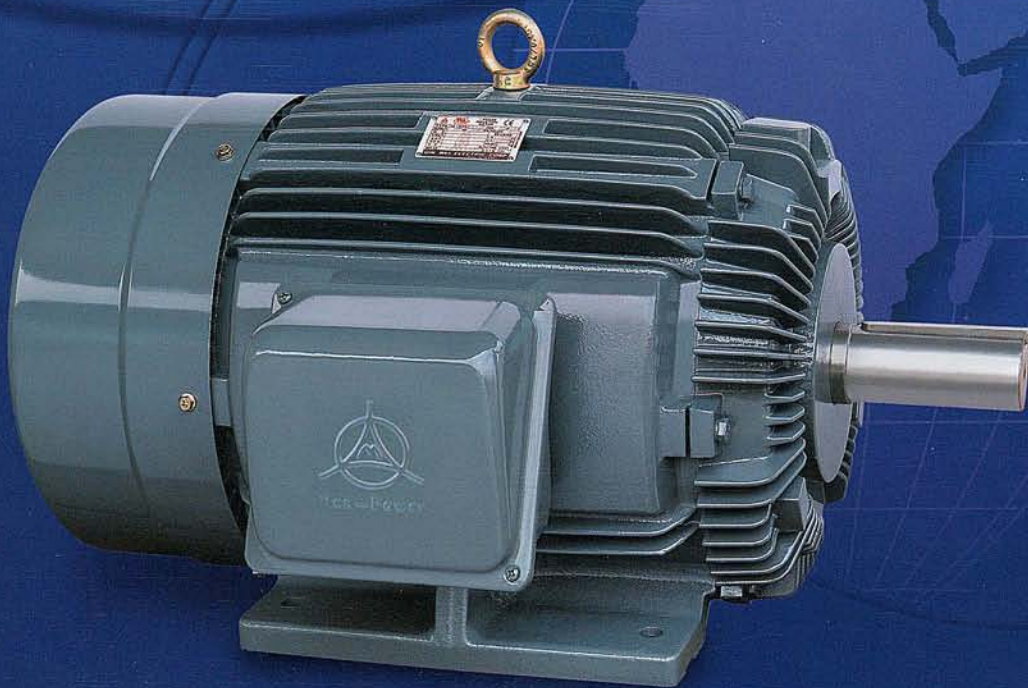




QIN WEI ELECTRIC CORP.



AEHL • AEUL SERIES  
HIGH EFFICIENCY **MOTOR**



# QIN WEI ELECTRIC CORP.



**OFFERING** Professional Techniques  
**QUALITY** Recognized Worldwide

Noise & Vibration Test



Computerized Testing of Coiled Stator



Certified by international Standard Organization

**ISO-9001**



R53086

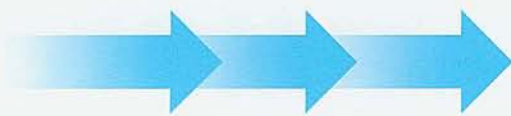
E212711

E120635

LR99627

Recognized by Quality Guarantee System





- ◆ Excellent Thinking
- ◆ Creative Method
- ◆ Gratifying Products
- ◆ Superior Service



- Induction Motor Torsion Test

3D Test Machine

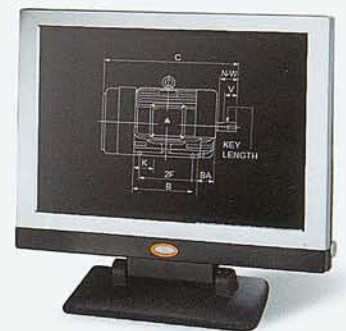


The company has been designing and manufacturing low voltage single and three phase induction motor and high efficiency series of products with professional techniques since its established. Under the leadership of our general manager and contribution of every staff member, we have passed USA's UL and Canada's CSA safety certification and are authorized to use the UL and CSA mark. We also approved the ISO9001 international quality certification.

All products are designed and produced in accordance with the ISO quality system. By employing IEC international standard specification, we integrate the domestic system with the international one together. We adopt precisely testing apparatuses, paint-spraying equipment and well-organized production process in order to enhance our competitions of products in the international market. CE certification system is also our aim to further upgrade the quality of products. After various strictly tests with our uncompromised QC policy, our whole motor series was CE certification approved(include IP23, IP55). Now, our sales market is spread worldwide and we always receive very good with positive response of our quality products from customers.

In addition, based on our 20 years practical technical experience, professional service team and international management concept, we have further expanded our market to China. As a result of our persistency in making improvement, we employ the most advanced computerized designing apparatuses and the most updated noise testing room to develop compact, lightweight, low-noise level, high efficiency and suitable multi-purpose of motors for various machinery using.

Customer's satisfactory is always our priority. Sincerely, we do hope to create the "win-win" situation between customer and us.



AEHL • AEUL Series **HIGH EFFICIENCY MOTOR**



Automatic Coiling stator Machine



High Speed Punch & Stamp Machine



CNC lathing of shaft spindles



Process Frame

*No ending for making progress. ▶▶▶▶▶*

## DESIGN & MANUFACTURE

- ◆ High Efficiency Motor
- ◆ IEC Standard Motor (3 Phase)
- ◆ NEMA Motor
- ◆ Single Phase Motor
- ◆ Rolled Steel Frame Motor
- ◆ Vibration Protected Motor
- ◆ Inverter Duty Motor
- ◆ High Frequency Motor
- ◆ Water Pump Motor
- ◆ Gear Motor
- ◆ Definite Purpose Motor



Production Line

4651346513214025465458463100215  
65431354804346845432101546543

Electrostatic coating, low temperature painting



# QIN WEI

Complete with EQUIPMENTS



- Stylish look
- High precision
- Firmly built for durability
- Powerful and quiet

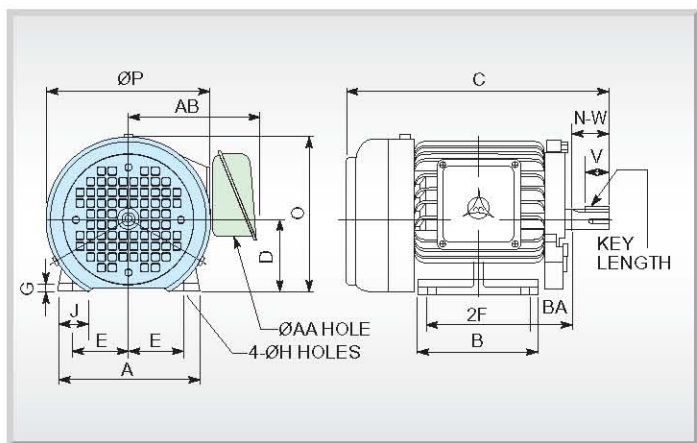


FIG.1

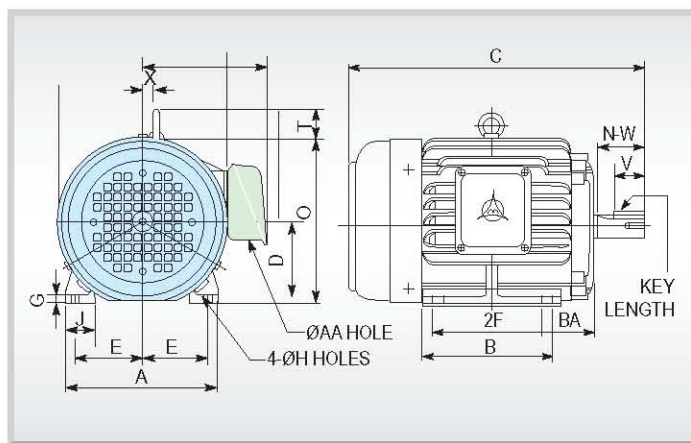


FIG.2

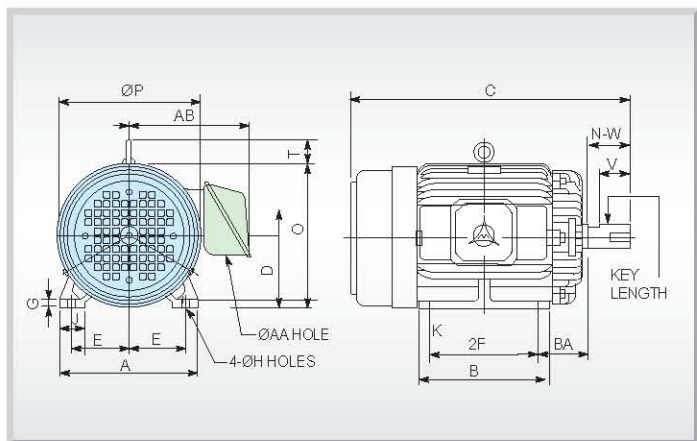


FIG.3

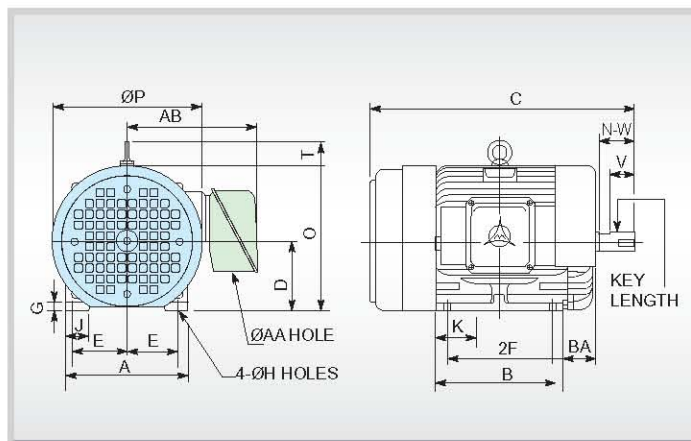


FIG.4

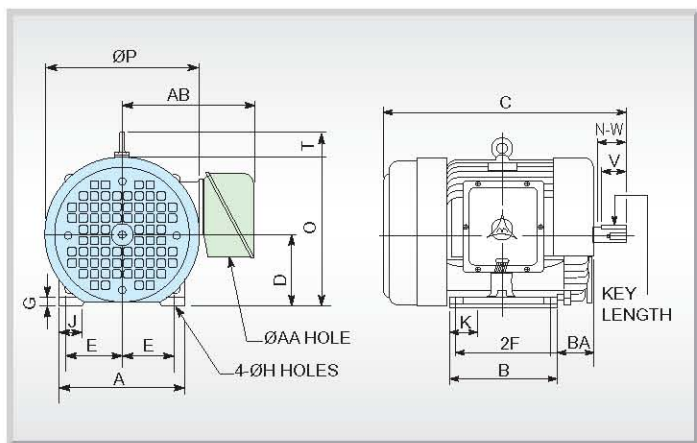


FIG.5

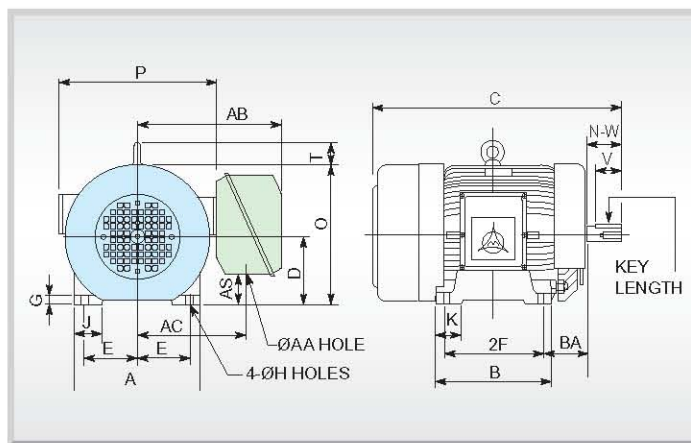


FIG.6

# NEMA AEHL·AEUL SERIES MOTOR

Key			Keyseat	Conduit Box		Shaft Extension			Bearings		Appr. Wt (Lbs.)	Frame No.
Width	Thickness	Length	R	AA	AB	N-W	U	V	Drive End	Opposite Drive End		
0.188	0.188	1.375	0.771	1.10	6.46	2.25	0.875	2.20	6205ZZ	6205ZZ	42.5	143T
0.188	0.188	1.375	0.771	1.10	6.46	2.25	0.875	2.20	6205ZZ	6205ZZ	53.5	145T
0.250	0.250	1.750	0.986	1.10	7.09	2.75	1.125	2.70	6207ZZ	6206ZZ	78.0	182T
0.250	0.250	1.750	0.986	1.10	7.09	2.75	1.125	2.70	6207ZZ	6206ZZ	93.0	184T
0.312	0.312	2.375	1.201	1.38	8.39	3.38	1.375	3.30	6308ZZ	6208ZZ	140	213T
0.312	0.312	2.375	1.201	1.38	8.39	3.38	1.375	3.30	6308ZZ	6208ZZ	152	215T
0.375	0.375	2.875	1.416	2.05	10.80	4.00	1.625	3.90	6310ZZ	6208ZZ	290	254T
0.375	0.375	2.875	1.416	2.05	10.80	4.00	1.625	3.90	6310ZZ	6208ZZ	325	256T
0.500	0.500	3.250	1.591	2.36	13.40	4.62	1.875	4.50	6310ZZ	6210ZZ	430	284T
0.375	0.375	1.875	1.416	2.36	13.40	3.25	1.625	3.20	6310ZZ	6210ZZ	425	284TS
0.500	0.500	3.250	1.591	2.36	13.40	4.62	1.875	4.50	6310ZZ	6210ZZ	475	286T
0.375	0.375	1.875	1.416	2.36	13.40	3.25	1.625	3.20	6310ZZ	6210ZZ	465	286TS
0.500	0.500	3.875	1.845	2.36	14.37	5.25	2.125	5.00	6312	6212	650	324T
0.500	0.500	2.000	1.591	2.36	14.37	3.75	1.875	3.50	6312C3	6212C3	640	324TS
0.500	0.500	3.875	1.845	2.36	14.37	5.25	2.125	5.00	6312	6212	710	326T
0.500	0.500	2.000	1.591	2.36	14.37	3.75	1.875	3.50	6312C3	6212C3	700	326TS
0.625	0.625	4.250	2.021	3.58	17.32	5.88	2.375	5.75	NU215	6312	850	364T
0.500	0.500	2.000	1.591	3.58	17.32	3.75	1.875	3.50	6312C3	6312C3	835	364TS
0.625	0.625	4.250	2.021	3.58	17.32	5.88	2.375	5.75	NU215	6312	950	365T
0.500	0.500	2.000	1.591	3.58	17.32	3.75	1.875	3.50	6312C3	6312C3	935	365TS
0.750	0.750	5.625	2.450	4.65	20.87	7.25	2.875	7.00	NU218	6313	1450	404T
0.750	0.750	5.625	2.450	4.65	20.87	7.25	2.875	7.00	NU218	6313	1600	450T
0.500	0.500	2.750	1.845	4.65	20.87	4.25	2.125	4.00	6313C3	6313C3	1600	450TS

Dimension in mm

Frame No.	Fig. No.	MOUNTING			BA	A	B	C	D	G	J	K	P	O+T
		E	2F	H										
143T	1	2.75	4.00	0.34	2.25	6.93	4.88	12.25	3.50	0.35	1.57	—	8.15	7.57
145T		2.75	5.00	0.34	2.25	6.93	5.87	13.24	3.50	0.35	1.57	—	8.15	7.57
182T	2	3.75	4.50	0.41	2.75	8.66	5.59	14.43	4.50	0.56	1.57	—	9.55	10.90
184T		3.75	5.50	0.41	2.75	8.66	6.61	15.42	4.50	0.56	1.57	—	9.55	10.90
213T	3	4.25	5.50	0.41	3.50	10.23	6.89	17.94	5.25	0.65	1.97	—	11.20	12.49
215T		4.25	7.00	0.41	3.50	10.23	8.39	19.43	5.25	0.65	1.97	—	11.20	12.49
254T	3	5.00	8.25	0.53	4.25	12.12	9.84	23.40	6.25	0.71	2.36	—	12.80	14.60
256T		5.00	10.00	0.53	4.25	12.12	11.60	25.10	6.25	0.71	2.36	—	12.80	14.60
284T	4	5.50	9.50	0.53	4.75	12.76	11.26	26.90	7.00	0.79	2.36	3.25	15.75	17.30
284TS		5.50	9.50	0.53	4.75	12.76	11.26	25.53	7.00	0.79	2.36	3.25	15.75	17.30
286T	4	5.50	11.00	0.53	4.75	12.76	12.76	28.40	7.00	0.79	2.36	3.25	15.75	17.30
286TS		5.50	11.00	0.53	4.75	12.76	12.76	27.03	7.00	0.79	2.36	3.25	15.75	17.30
324T	4	6.25	10.50	0.66	5.25	14.88	12.68	29.70	8.00	0.91	3.15	3.15	17.75	19.13
324TS		6.25	10.50	0.66	5.25	14.88	12.68	26.32	8.00	0.91	3.15	3.15	17.75	19.13
326T	4	6.25	12.00	0.66	5.25	14.88	14.17	31.32	8.00	0.91	3.15	3.15	17.75	19.13
326TS		6.25	12.00	0.66	5.25	14.88	14.17	27.82	8.00	0.91	3.15	3.15	17.75	19.13
364T	5	7.00	11.25	0.66	5.88	16.40	14.40	32.54	9.00	0.93	3.15	4.73	19.10	21.30
364TS		7.00	11.25	0.66	5.88	16.40	14.40	30.41	9.00	0.93	3.15	4.73	19.10	21.30
365T	5	7.00	12.25	0.66	5.88	16.40	15.40	33.52	9.00	0.93	3.15	4.73	19.10	21.30
365TS		7.00	12.25	0.66	5.88	16.40	15.40	31.39	9.00	0.93	3.15	4.73	19.10	21.30
404T	6	8.00	12.25	0.81	6.62	19.13	16.34	39.10	10.00	1.34	3.94	5.91	23.60	24.50
450T		6	8.00	13.75	0.81	6.62	19.13	17.68	40.60	10.00	1.34	3.94	5.91	23.60
450TS	8.00		13.75	0.81	6.62	19.13	17.68	37.60	10.00	1.34	3.94	5.91	23.60	24.50

Dimension in mm

- Note:**
1. Tolerance on dimension D: +0.01 inch, -0.06 inch.
  2. Tolerance on dimension U: +0.000 inch, -0.0005 inch for frame 143-215. +0.000 inch, -0.001 inch for frame 254-449.
  3. Tolerance on dimension R: +0.000 inch, -0.015 inch.
  4. Dimension V is the length of straight part shaft.
  5. Performance data is available on request.

# IEC AEHL SERIES The chart of outer dimension

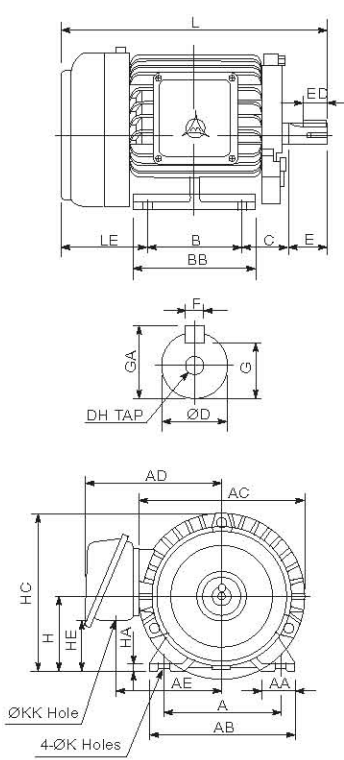


FIG.1

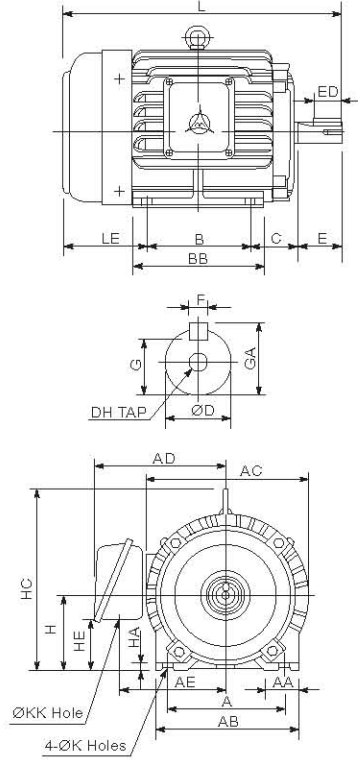


FIG.2

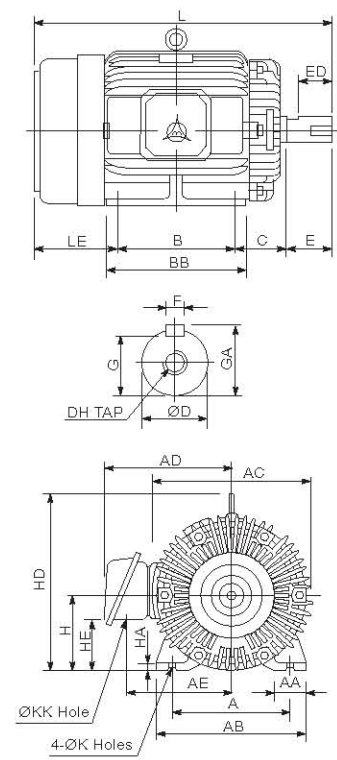
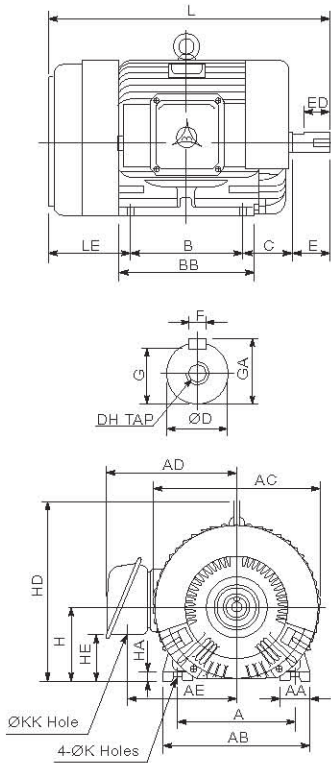


FIG.3

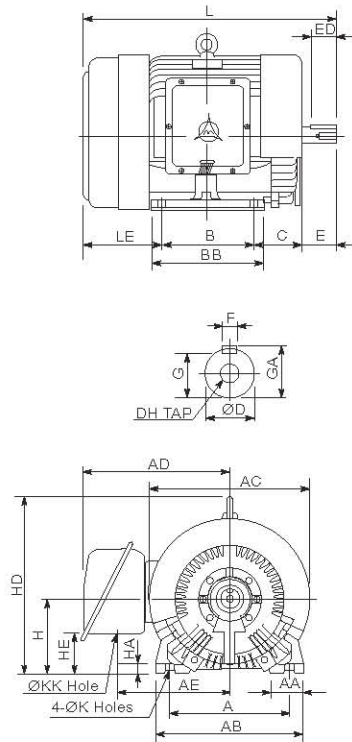
OUTPUT(HP)			FRAME	FIGURE NO.	A	AA	AB	AC	AD	AE	B	BA	BB	C	H	HA	HC	HD	HE		
2P	4P	6P																			
0.25	0.25	—	63	1	100	28	120	144	123	93	80	—	100	40	63	8.0	135.0	—	29		
0.5	0.5	0.25	71		112	35.5	140	162	133	103	90	—	115	45	71	8.0	152.0	—	54		
1	1	0.5	80		125	35.5	155	177	144	112	100	—	130	50	80	9.0	168.5	—	55		
2	3	2	1		90L	140	35.5	170	200	157	125	125	—	150	56	90	10.0	190.0	—	65	
—	3	2	100L	2	160	45	195	219	180	145	140	—	175	63	100	12.5	—	243	71		
5	5	3	112M		190	45	224	235	189	154	140	—	175	70	112	14.0	—	265	83		
7.5	10	7.5	132S		216	45	250	273	225	180	140	—	175	89	132	16.0	—	310	83		
—	10	7.5	132M		216	45	250	273	225	180	178	—	212	89	132	16.0	—	310	83		
15	20	15	10	160M	3	254	50	300	334	263	218	210	—	250	108	160	18.0	—	377	108	
25	20	15	160L	254								300									
30	—	—	180MA	4	3	279	75	355	382	305	250	241	—	297	121	180	20.0	—	421	119	
—	25	30	20	180MC																	
40	—	—	180LA	4																	
—	40	25	30	180LC																	3
50	60	—	—	200LA	4	318	80	400	458	362	299	305	—	365	133	200	25.0	—	499	129	
—	50	60	40	50																	200LC
75	—	—	—	225SA																	
—	75	60	—	225SC																	
100	—	—	—	250SA	5	406	110	500	545	499	384	311	—	385	168	250	32.0	—	592	139	
—	100	75	—	250SC																	
150	—	—	—	280S	6	457	110	560	625	610	455	368	110	445	190	280	36	—	710	91	
—	150	125	—	280M																	
175	—	—	—	280M	6	457	110	560	625	610	455	419	130	495	190	280	36	—	710	91	
—	175	150	—	280M																	

Dimension in mm

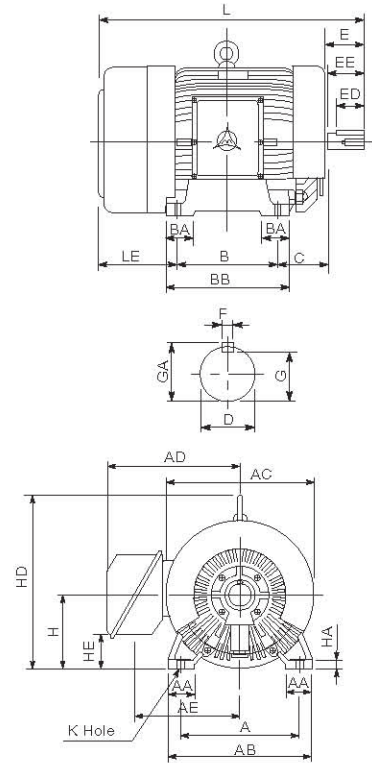
Note: 1. Shaft diameter of D common difference:  $\phi 11\text{-}\phi 28$  :J6,  $\phi 38\text{-}\phi 48$  :k6,  $\phi 55\text{-}\phi 75$  :m6.  
 2. Shaft height of H common difference: +0, -0.5  
 3. All figures subject to change without notice



**FIG.4**



**FIG.5**

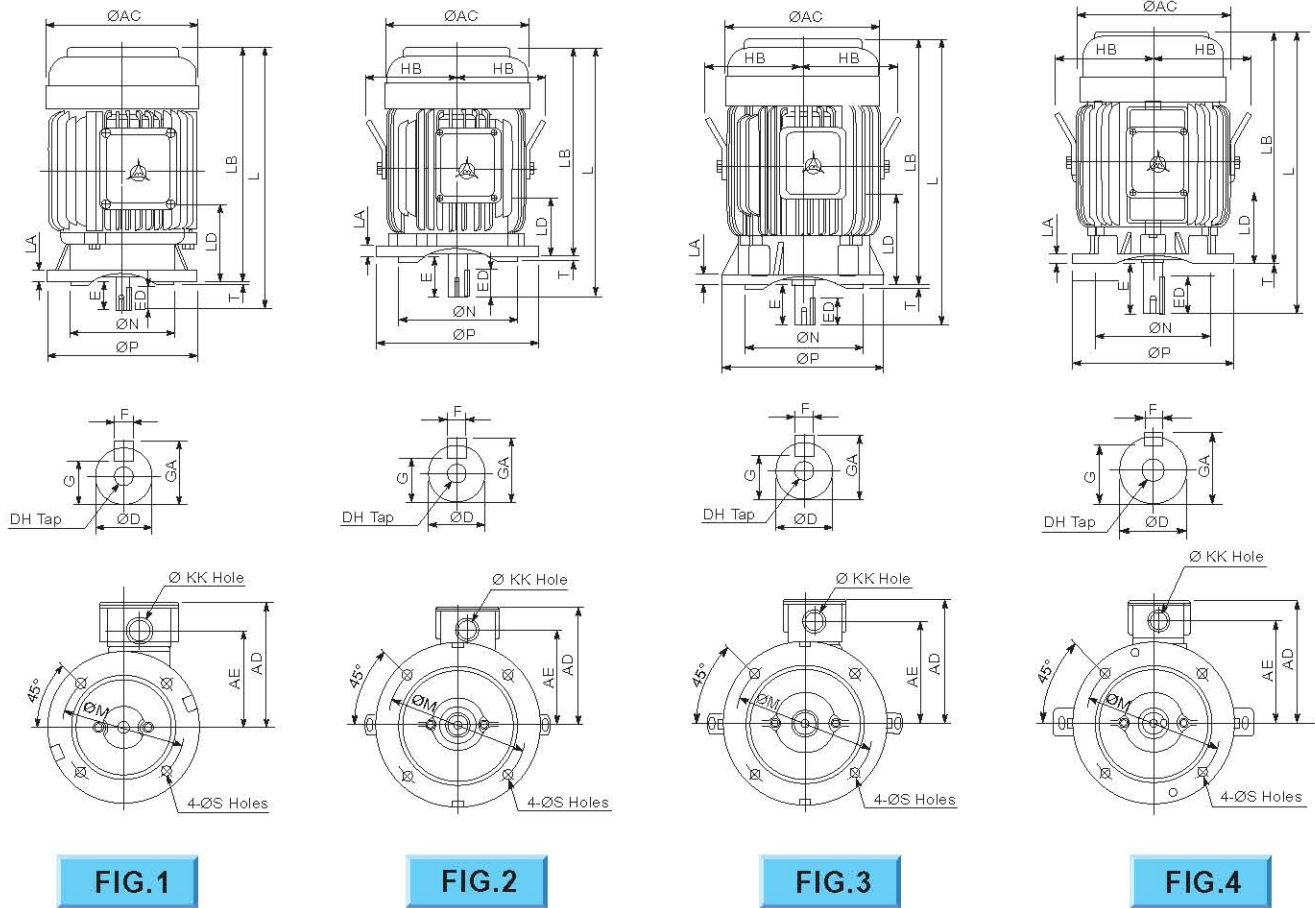


**FIG.6**

K	KK	L	LE	SHAFT END								BEARINGS		WEIGHT KGS
				D	E	ED	EE	F	G	GA	DH	LOAD SIDE	OUT OF LOAD SIDE	
7	ø22	219.0	76.0	11	23	18	-	4	8.5	12.5	M4 x 8	6201ZZ	6201ZZ	8.5
7	ø22	250.5	85.5	14	30	24	-	5	11.0	16.0	M5 x 10	6203ZZ	6202ZZ	11.5
10	ø22	282.5	92.5	19	40	25	-	6	15.5	21.5	M6 x 12	6204ZZ	6203ZZ	17.0
10	ø22	332.5	101.5	24	50	32	-	8	20.0	27.0	M8 x 16	6205ZZ	6204ZZ	24.0
12	ø28	374.5	111.5	28	60	40	-	8	24.0	31.0	M10 x 20	6206ZZ	6205ZZ	37.0
12	ø28	391.5	121.5	28	60	40	-	8	24.0	31.0	M10 x 20	6306ZZ	6305ZZ	46.0
12	ø35	454.0	145.0	38	80	64	-	10	33.0	41.0	M12 x 24	6308ZZ	6306ZZ	68.0
12	ø35	492.0										6308ZZ	6306ZZ	79.0
14.5	35	608.0	180.0	42	110	80	-	12	37.0	45.0	M16 x 32	6309ZZ	6307ZZ	125.0
		652.0										6309ZZ	6307ZZ	140.0
14.5	52	672.0	200.0	48	110	80	-	14	42.5	51.5	M16 x 32	6311ZZC3	6310ZZC3	179.0
												6311ZZ	6310ZZ	195.0
14.5	52	710.0	200.0	55	110	80	-	16	49.0	59.0	M20 x 40	6312ZZC3	6310ZZC3	198.0
												6312ZZ	6310ZZ	223.0
18.5	65	774.5	226.5	55	110	80	-	16	49.0	59.0	M20 x 40	6312ZZC3	6212ZZC3	312.0
		804.5		60	140	110	-	18	53.0	64.0	M20 x 40	6314ZZ	6212ZZ	324.0
	92	786.0	241.0	55	110	80	-	16	49.0	59.0	M20 x 40	6312ZZC3	6212ZZC3	400.0
		816.0		65	140	110	-	18	58.0	69.0	M20 x 40	6315ZZ	6213ZZ	412.0
24	92	852.5	263.5	55	110	80	-	16	49.0	59.0	M20 x 40	6313C3	6313C3	449.0
		882.5		75	140	110	-	20	67.5	79.5	M20 x 40	NU316	6313	508.0
24	-	1012	344	55	110	80	104	16	49	59	-	6314C3	6314C3	680
		1072		85	170	140	157	22	76	90	-	NU320C3	6316	740/760
24	-	1062	343	55	110	80	104	16	49	59	-	6314C3	6314C3	725
		1122		85	170	140	157	22	76	90	-	NU320C3	6316	810/820

Dimension in mm

# IEC AEUL SERIES The chart of outer dimension



**FIG.1**

**FIG.2**

**FIG.3**

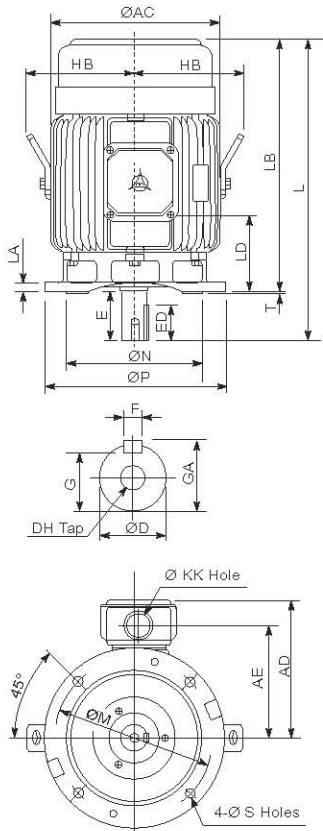
**FIG.4**

OUTPUT(HP)			FRAME	FIGURE NO.	AC	AD	AE	HB	KK	L	LA	LB	LD	M	N	P	S	T			
2P	4P	6P																			
0.25	0.25	—	63	1	144	123	93	-	22	248.0	12	225.0	74	130	110	160	10.0	3.5			
0.5	0.5	—	71		162	133	103	-	22	277.5	12	247.5	82	130	110	160	10.0	3.5			
1	1	0.5	80	2	177	144	112	-	22	282.0	12	242.0	60	165	130	200	12.0	3.5			
2	3	2	1	90L	3	200	157	125	-	22	371.5	12	321.5	113	165	130	200	12.0	3.5		
—	3	2	100L	2	219	180	145	140	28	374.5	16	314.5	88	215	180	250	14.5	4.0			
5	5	3	112M	3	235	189	154	150	28	431.0	16	371.0	135	215	180	250	14.5	4.0			
7.5	10	7.5	5	132S	2	273	224	180	169	35	454.0	374.0	97	265	230	300	14.5	4.0			
—	10	7.5	132M																492.0	412.0	116
15	20	15	10	160M	4	334	263	218	271	35	608	498	151.0	300	250	350	18.5	5.0			
25	20	15	160L																652	542	173.0
30	—	—	180MA	5	382	305	250	241	52	672	20	562	170.5	350	300	400	18.5	5.0			
—	25	30	180MC																672	562	170.5
40	—	—	180LA																710	600	189.5
—	40	25	30																		
50	60	—	—	200LA	6	458	362	299	286	65	774.5	664.5	194.5	400	350	450	18.5	5.0			
—	50	60	40																50	200LC	804.5
75	—	—	—	225SA	510	411	337	312	92	786.0	22	676.0	190.0	500	450	550	18.5	5.0			
—	75	60	—																225SC	816.0	
100	—	—	—	250SA	7	545	499	384	329.5	92	882.5	22	742.5	182.5	500	450	550	18.5	5.0		
—	100	75	—																	250SC	882.5

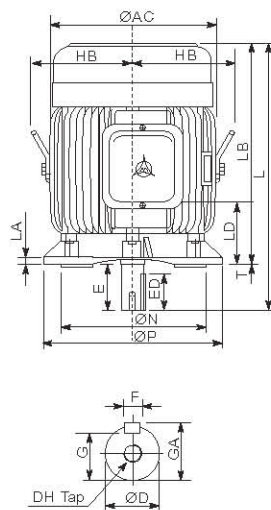
Dimension in mm

Note: 1. Shaft diameter of D common difference:  $\phi 11-\phi 28$  :J6,  $\phi 38-\phi 48$  :k6,  $\phi 55-\phi 75$  :m6.  
 2. Shaft height of H common difference: +0, -0.5  
 3. All figures subject to change without notice

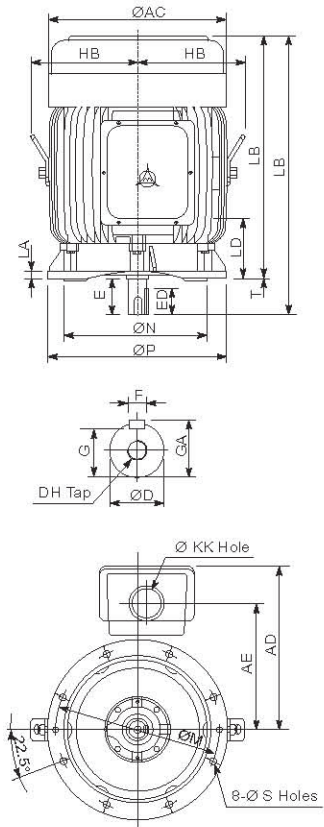
# IEC AEUL SERIES MOTOR



**FIG.5**



**FIG.6**



**FIG.7**

OUTPUT (HP)			FIGURE NO.	SHAFT END								BEARINGS		WEIGHT KGS										
2P	4P	6P		D	E	ED	EE	F	G	GA	DH	LOAD SIDE	OUT OF LOAD SIDE											
0.25	0.25	—	1	11	23	18	-	4	8.5	12.5	M4 x 8	6201ZZ	6201ZZ	9.5										
0.5	0.5	—		14	30	24	-	5	11.0	16.0	M5 x 10	6203ZZ	6202ZZ	12.5										
1	1	0.5	2	19	40	25	-	6	15.5	21.5	M6 x 12	6204ZZ	6203ZZ	19.0										
2	3	2	1	3	24	50	32	-	8	20.0	27.0	M8 x 16	6205ZZ	6204ZZ	27.0									
	—	3	2	2	28	60	40	-	8	24.0	31.0	M10 x 20	6206ZZ	6205ZZ	40.0									
5	5	3	3	3	28	60	40	-	8	24.0	31.0	M10 x 20	6306ZZ	6305ZZ	51.0									
7.5	10	7.5	2	2	38	80	64	-	10	33.0	41.0	M12 x 24	6308ZZ	6306ZZ	73.0									
													6308ZZ	6306ZZ	84.0									
15	20	15	10	4	42	110	80	-	12	37.0	45.0	M16 x 32	6309ZZ	6307ZZ	133.0									
													6309ZZ	6307ZZ	148.0									
30	—	—	5	5	48	110	80	-	14	42.5	51.5	M16 x 32	6311ZZC3	6310ZZC3	187.0									
—	25	30											20	6311ZZ	6310ZZ	203.0								
40	—	—											—	6312ZZC3	6310ZZC3	206.0								
—	40	25											30	6312ZZ	6310ZZ	231.0								
50	60	—	6	6	55	110	80	-	16	49.0	59.0	M20 x 40	6312ZZC3	6212ZZC3	322.0									
—	50	60											40	50	6314ZZ	6212ZZ	334.0							
75	—	—											—	55	110	80	-	16	49.0	59.0	M20 x 40	6312ZZC3	6212ZZC3	420.0
—	75	60											—	65	140	110	-	18	58.0	69.0	M20 x 40	6315ZZ	6213ZZ	432.0
100	—	—	7	7	55	110	80	-	16	49.0	59.0	M20 x 40	6313C3	6313C3	469.0									
—	100	75											—	75	140	110	-	20	67.5	79.5	M20 x 40	NU316	6313	528.0

Dimension in mm

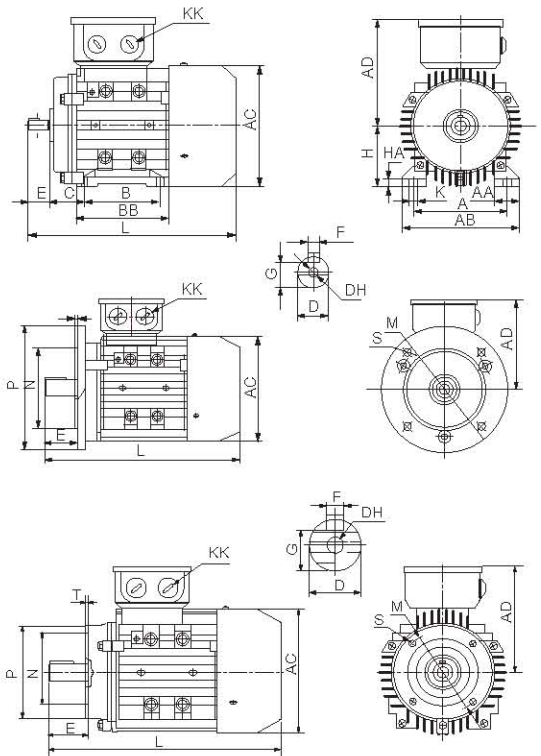
# QW ALUMINUM SERIES MOTOR



**IM B3  
56-160**

**IM B5/IM B35  
56-160**

**IM B14  
56-132**



## Features

- 0.25HP - 20HP
- Aluminum House
- Wide Voltage Range
  - 50HZ : 200V, 220V/380V, 415V
  - 60HZ : 200V, 220/380V, 440V, 460V, 480V
- Insulation Class : F Class
- Protection Class : IP 55
- S.F. 1.15
- EFF 1
- Flexible Terminal Box
- CE, UL, CSA, ISO9001 Certificate
- Shaft End are Tapped

Fram SIZE	IM B3																IM B5							
	A	AA	AB	BB	HA	AC	AD	B	C	D	DH	E	F	G	H	K	KK		L	M	N	P	S	T
																	METRIC		PG					
56	90	23	116	88	7	110	100	71	36	9	M4 x 12	20	3	7.2	56	5.8	1-M20x1.5	1-PG11	199	100	80	120	7	3.0
63	100	24	135	100	7	130	111	80	40	11	M4 x 12	23	4	8.5	63	7.0	1-M20x1.5	1-PG11	217	115	95	140	10	3.0
71	112	26	150	110	8	145	118	90	45	14	M5 x 12	30	5	11	71	7.0	1-M20x1.5	1-PG11	245	130	110	160	10	3.5
80	125	35	165	125	9	154	124	100	50	19	M6 x 16	40	6	15.5	80	10.0	1-M25x1.5	1-PG11	287	165	130	200	12	3.5
90S	140	37	180	125	10	173	140	100	56	24	M8 x 19	50	8	20.0	90	10.0	1-M25x1.5	1-PG16	315	165	130	200	12	3.5
90L	140	37	180	150	10	173	140	125	56	24	M8 x 19	50	8	20.0	90	10.0	1-M25x1.5	1-PG16	340	165	130	200	12	3.5
100L	160	40	205	172	11	194	160	140	63	28	M10 x 22	60	8	24.0	100	12.0	1-M32x1.5	1-PG16	385	215	180	250	14.5	4.0
112M	190	41	230	181	12	217	178	140	70	28	M10 x 22	60	8	24.0	112	12.0	1-M32x1.5	1-PG21	400	215	180	250	14.5	4.0
132S	216	51	270	186	15	232	206	140	89	38	M12 x 28	80	10	33.0	132	12.0	1-M32x1.5	1-PG21	483	265	230	300	14.5	4.0
132M	216	51	270	224	15	232	206	178	89	38	M12 x 28	80	10	33.0	132	12.0	1-M32x1.5	1-PG21	510	265	230	300	14.5	4.0
160M	254	55	320	260	18	266	255	210	108	42	M16 x 36	110	12	37.0	160	15.0	1-M40x1.5	1-PG29	645	300	250	350	18.5	5.0
160L	254	55	320	304	18	266	255	254	108	42	M16 x 36	110	12	37.0	160	15.0	1-M40x1.5	1-PG29	670	300	250	350	18.5	5.0

Dimension in mm

Fram SIZE	AC	AD	D	DH	E	F	G	KK		L	B14						
								METRIC			PG		M	N	P	S	T
56	110	100	9	M4x12	20	3	7.2	1-M20 x 1.5	1-PG11	199	65	50	80	M5	2.5		
63	130	111	11	M4x12	23	4	8.5	1-M20 x 1.5	1-PG11	217	75	60	90	M5	2.5		
71	145	118	14	M5x12	30	5	11.0	1-M20 x 1.5	1-PG11	245	85	70	105	M6	2.5		
80	154	134	19	M6x16	40	5	15.5	1-M25 x 1.5	1-PG16	297	100	80	120	M6	3.0		
90S	173	140	24	M8x19	50	8	20.0	1-M25 x 1.5	1-PG16	315	115	95	140	M8	3.0		
90L	173	140	24	M8x19	50	8	20.0	1-M25 x 1.5	1-PG16	340	115	95	140	M8	3.0		
100L	194	160	28	M10x22	60	8	24.0	1-M32 x 1.5	1-PG21	385	130	110	160	M8	3.5		
112M	217	178	28	M10x22	60	8	24.0	2-M32 x 1.5	2-PG21	400	130	110	160	M8	3.5		
132S	232	206	38	M12x28	80	10	33.0	2-M32 x 1.5	2-PG21	483	165	130	200	M10	3.5		
132M	232	206	38	M12x28	80	10	33.0	2-M32 x 1.5	2-PG21	510	165	130	200	M10	3.5		
160M	266	255	42	M16x36	110	12	37.0	2-M40 x 1.5	2-PG29	615	-	-	-	-	-		
160L	266	255	42	M16x36	110	12	37.0	2-M40 x 1.5	2-PG29	670	-	-	-	-	-		

Dimension in mm



• Rolled Steel Frame Motor



• Single Phase Rolled Steel Motor



• SUS Chemical Pump Motor



• Inverter Duty Motor



• High Voltage Clean Purpose Motor



• Gear Reducer Motor



• IEC Aluminum Motor



• Wood Working Machine Motor



• Gear Box



• Gear Reducer Motor



• Gear Reducer Motor



• Gear Reducer Motor



• Three Phase Magnetic Pump Motor



• ODP Motor

# AEHL·AEUL SERIES MOTOR

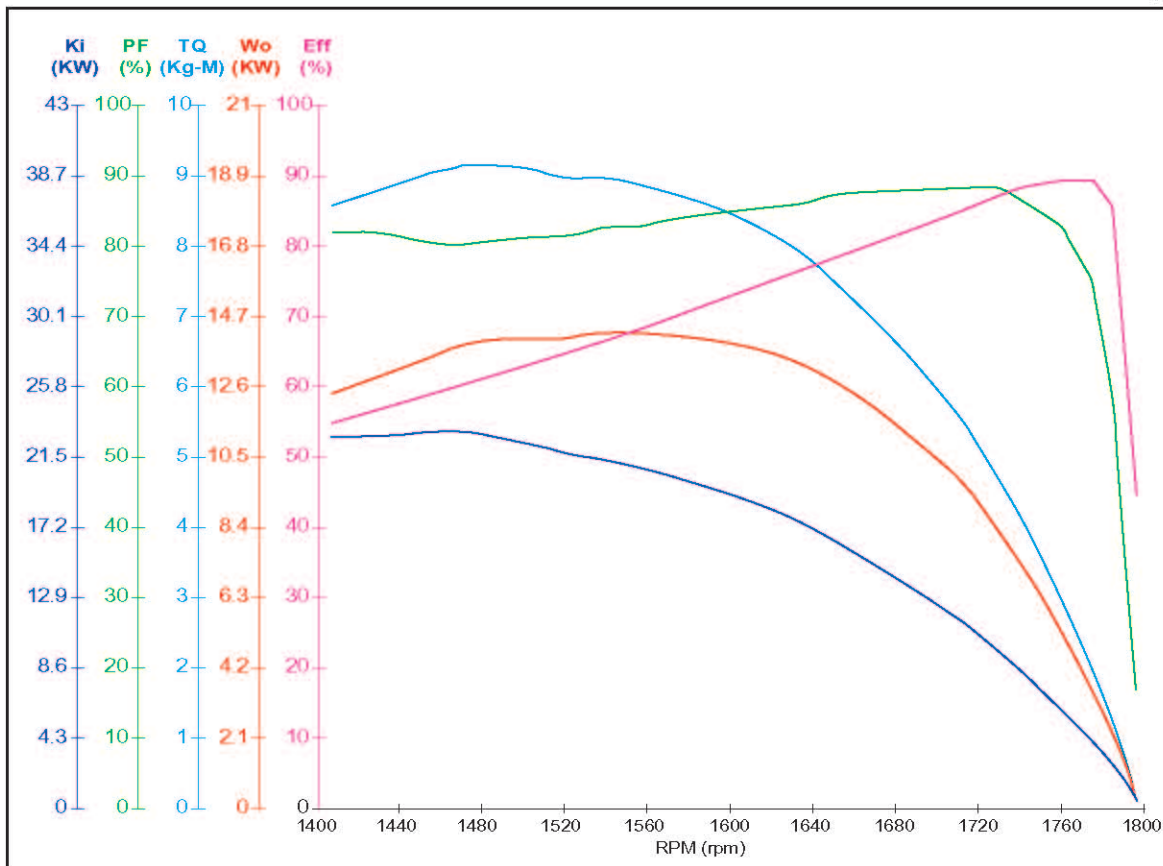
TOTAL ENCLOSED, AMBIENT 40°C, CONTINUOUS DUTY, SERVICE FACTOR S.F.:1.0

Output		Pole	Frame	Full Load Speed RPM	Efficiency	Power Factor	Current		Torque				Rotor GD kg·m <sup>2</sup>
HP	KW				Full Load (%)	Full Load (%)	Full Load (A)	Start (A)	Full Load Torque kg·m	Locked Rotor Torque % flt	Pull Up Torque % flt	Break Down Torque % flt	
0.25	0.18	2	63	3330	67.0	81.0	0.90	4.10	0.055	310	305	340	0.002
		4	63	1695	70.6	70.5	1.04	4.10	0.108	283	280	287	0.002
		6	71	1120	66.0	67.0	1.11	5.00	0.162	230	210	275	0.007
0.5	0.37	2	71	3340	75.0	86.0	1.54	10.0	0.109	270	240	270	0.002
		4	71	1690	71.0	72.5	2.00	9.0	0.211	320	235	299	0.005
		6	80	1120	70.0	69.0	2.03	10.0	0.324	200	195	210	0.009
1	0.75	2	80	3400	77.0	91.0	2.62	17.0	0.213	255	220	219	0.005
		4	80	1720	81.0	79.2	3.40	20.0	0.422	246	260	219	0.010
		6	90L	1130	78.5	72.5	3.44	20.0	0.642	180	165	220	0.017
2	1.5	2	90L	3440	82.5	88.0	5.10	35.6	0.434	260	240	309	0.010
		4	90L	1720	85.0	84.0	5.50	33.0	0.845	225	160	290	0.017
		6	100L	1145	85.5	72.0	6.36	40.0	1.268	230	205	260	0.059
3	2.2	2	90L	3440	84.0	89.0	7.60	55.0	0.629	280	250	350	0.013
		4	100L	1720	86.5	84.0	8.50	70.0	1.267	270	220	300	0.041
		6	112M	1165	86.5	71.0	9.60	60.0	1.869	180	170	280	0.084
5	3.7	2	112M	3495	86.5	91.0	12.8	110	1.056	270	250	318	0.038
		4	112M	1730	87.5	85.5	13.5	90.0	2.112	209	165	260	0.059
		6	132S	1170	86.5	76.0	14.9	95.0	3.102	190	175	290	0.131
7.5	5.5	2	132S	3505	88.5	89.0	18.5	135	1.553	230	190	255	0.063
		4	132S	1740	88.5	84.0	21.0	150	3.167	275	200	285	0.103
		6	132M	1165	88.5	78.5	21.1	150	4.673	200	175	300	0.189
10	7.5	2	132S	3510	88.5	85.5	26.0	200	2.112	230	190	309	0.072
		4	132M	1750	91.0	87.0	26.0	175	4.172	218	185	274	0.133
		6	160M	1170	88.5	78.0	28.4	220	6.204	280	225	290	0.420
15	11	2	160M	3540	89.5	89.5	36.7	290	3.076	230	190	300	0.147
		4	160M	1760	92.0	87.5	38.0	265	6.186	220	165	250	0.330
		6	160L	1165	89.5	79.0	41.5	285	9.346	260	220	250	0.588
20	15	2	160M	3525	90.2	91.0	47.7	350	4.118	220	160	265	0.183
		4	160L	1750	92.0	88.9	49.0	360	8.276	210	165	245	0.381
		6	180M	1175	90.0	81.0	54.0	365	12.355	245	205	250	1.054
25	18.5	2	160L	3530	91.0	92.0	58.5	465	5.141	240	175	280	0.237
		4	180M	1760	91.7	86.0	62.1	440	10.310	220	205	250	0.657
		6	180L	1175	91.0	82.0	65.6	450	15.444	230	185	250	1.342
30	22	2	180M	3535	91.0	88.0	73.3	520	6.160	220	185	265	0.270
		4	180M	1760	91.7	85.5	74.9	535	12.373	240	195	260	0.715
		6	180L	1175	91.0	81.0	79.7	540	18.533	235	175	250	1.438
40	30	2	180L	3535	91.0	88.0	97.8	700	8.213	235	195	270	0.340
		4	180L	1750	92.5	88.0	96.3	615	16.591	205	170	235	0.810
		6	200L	1180	92.5	85.0	100	670	24.605	225	195	240	2.326
50	37	2	200L	3555	91.7	87.5	122	945	10.209	160	150	300	0.905
		4	200L	1775	92.4	83.0	128	830	20.447	200	180	250	1.481
		6	200L	1180	92.4	86.0	123	845	30.757	220	195	230	2.907
60	45	2	200L	3555	92.4	89.0	143	1085	12.251	150	135	270	1.074
		4	200L	1775	93.0	84.5	149	1050	24.536	200	180	250	1.731
		6	225S	1180	93.0	86.0	147	965	36.908	200	180	230	4.194
75	55	2	225S	3560	93.0	88.0	179	1230	15.292	150	140	300	1.211
		4	225S	1780	93.3	84.0	187	1235	30.584	230	185	220	2.897
		6	225S	1185	93.0	82.0	193	1450	45.940	195	180	290	6.492
100	75	2	250S	3560	93.6	89.5	234	1640	20.389	130	120	280	1.759
		4	250S	1780	94.1	88.5	235	1570	40.779	150	150	250	4.853
		6	250M	1185	93.6	83.5	250	1700	61.254	185	180	260	7.694

- Note:** 1. All motors are tested per JIS C4212, JEEE 112 method B standard, CNS 14400  
 2. All above numbers are real testing numbers.  
 3. The tolerance of performance is per IEC 34-1 (The assured lowest numbers of efficiency are conformed to CNS 14400)  
 4. All performances subject to change without notice.

# Motor Characteristic Testing Report

Qin Wei Electric corp.



Information	HEFF032				Customer	IEC	Test Date	2003/9/10
Rating <input type="checkbox"/> CNS 1057 <input type="checkbox"/> CNS 2934 <input type="checkbox"/> CNS 11873 <input type="checkbox"/> CNS 14400	Out Put	7.5HP/5.5KW	Pole	4P	Model	AEHL	Frame No	132S
	Phase	3 $\phi$		Voltage	220V		Frequency	60Hz
	Ins. Class	B		Current	23A		Start Current	188A
Changes <input type="checkbox"/> CW <input type="checkbox"/> CCW	Power Factor	77.00%		Efficiency	87.50%		Speed	1692 rpm
load	In Put	Out Put	Current	Speed	Torque	PF(%)	E.F.F(%)	
0%	0.54	0	8.6	1799	0	16.6	0	
25%	1.782	1.453	10.1	1790	0.792	44.5	72.2	
50%	3.288	2.893	12.7	1780	1.584	67.2	87.5	
75%	4.841	4.314	16.3	1770	2.375	78.3	89.1	
100%	6.43	5.713	20.4	1757	3.167	83.5	88.9	
125%	8.019	7.09	24.7	1744	3.959	86.2	88.4	
150%	9.275	8.433	29.6	1729	4.751	88.2	86.7	
Maximum Out Put	254%		Break Down Torque Ratio		289%			
Starting Torque Ratio	279%		Start Current		138A			
Temperature Rise	R1	$\Omega$	i1	$^{\circ}\text{C}$	RM	$^{\circ}\text{C}$		
	R2	$\Omega$	i2	$^{\circ}\text{C}$	RM	$^{\circ}\text{C}$		
Insu. Resistance	100 M $\Omega$ /500V		Direlectric Hi-V		1800 V/min			

NL : No Load , Ld : load , FL : Full Load , Tm : TQ max , LK : Lock

# HIGH MOTOR

EFFICIENCY DESIGN & MANUFACTURES



- ◆ High Efficiency Motor
- ◆ IEC Standard Motor (3 Phase)
- ◆ NEMA Motor
- ◆ Single Phase Motor
- ◆ Rolled Steel Frame Motor
- ◆ Vibration Protected Motor
- ◆ Inverter Duty Motor
- ◆ High Frequency Motor
- ◆ Water Pump Motor
- ◆ Gear Motor
- ◆ Definite Purpose Motor



Certified by international  
Standard Organization

**ISO-9001**

Recognized by Quality Guarantee System



## QIN WEI ELECTRIC CORP.

NO.1, ALLEY 181, LANE 967, SAN-FENG RD.,  
FENG-YUAN CITY, TAICHUNG HSIEN, TAIWAN

TEL:886-4-25131511 FAX:886-4-25255670

E-mail: [service@qwmotor.com](mailto:service@qwmotor.com)

<http://www.qwmotor.com>